

BOARD OF TRUSTEES

Tim Fulton, President.....District 6
 Joe Schiffer, V.P.....District 5
 J. Allen Baue, S/T.....District 2
 Reese Stahl.....District 1
 Richard Pinkerton.....District 3
 Steve Nile.....District 4
 Dennis Johnson.....District 7

OFFICE HOURS

Monday through Thursday
 7 a.m. to 5:30 p.m.

406-342-5521

MID-YELLOWSTONE ELECTRIC COOPERATIVE, INC.



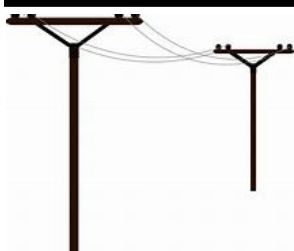
OFFICE PERSONNEL

Jason Brothen.....CEO
 Marj Cunningham.....Office Mgr
 Karen Morales.....Billing Clerk
 Jessica Welch.....Cust.Serv.Rep.

LINE PERSONNEL

Ken Rolandson....Operations Mgr
 Daren Reeder.....Lineman
 Trent Perkins.....Lineman
 John Cunningham.....Lineman
 Brent Battenfeld.....Lineman
 Tyler Fennern.....Appr.Lineman
 Ryan Silvis.....Appr.Lineman

P.O. BOX 386, HYSHAM, MT 59038



ALONG THESE LINES . . .



CALL BEFORE YOU DIG

Homeowners are installing mailboxes, building fences, planting trees and shrubs, building decks, patios or garages, putting in new gardens, etc.

Homeowners need to call 811—the “One Call” service—which then alerts utilities with underground facilities in the area of the dig. Every digging project requires a call to 811 at least 2 business days prior to the excavation. It’s the Law.

Instead of calling 811, homeowners can go to www.montana811.org and click on a box called “Homeowner — Submit a Locate Request Online.”

What information do you need before calling 811?

1. Your name, phone number, company name if applicable, and mailing address.
2. The name and phone number of an alternate contact in case you can’t be reached.
3. The type of work being done.
4. Who the work is being done for.
5. The county and city where the digging will occur.
6. The address or the street where the digging will occur.
7. The nearest cross street or road. (even if the intersection is miles away)
8. The distance and direction of the worksite from the intersection.
9. Either white or pink paint/flags to mark the outline of the area you will be digging.
10. The township, range, section, and quarter section of the worksite.
11. The GPS coordinates (if available) of the center point of the work area.

REMEMBER THAT COOPERATIVES AND OTHER UTILITIES ARE ONLY OBLIGATED TO LOCATE THEIR OWN FACILITIES. Many homeowners own numerous underground lines. Mid-Yellowstone Electric line crews often do not have the time to locate members’ underground lines. If MYEC is at the site locating its own underground lines; they may, on occasion, locate a line belonging to the member. Since many farmsteads have a cobweb of buried lines, MYEC will not guarantee an accurate location for members’ underground lines.

This institution is an equal opportunity provider and employer.

Rural Montana

Lightning Awareness: Remember the 30/30 Rule

The “30/30 Rule” is a simple guideline for lightning safety, helping individuals determine when to seek shelter during a thunderstorm. It involves counting the time between a lightning flash and the subsequent thunder. Here’s how it works:

30 Seconds: If the time between seeing lightning and hearing thunder is 30 seconds or less, it means the thunderstorm is close enough to be dangerous. Seek shelter immediately.

30 Minutes: After the last flash of lightning or rumble of thunder, wait at least 30 minutes before resuming outdoor activities.

Why it’s important:

- ♦ Lightning can strike far from the base of a thunderstorm, sometimes as far as 10 miles away.
- ♦ If you can hear thunder, you are within striking distance of a thunderstorm and in danger.
- ♦ Following the 30/30 rule helps ensure you are in a safe place during the most dangerous parts of a storm.

Also remember:

- ♦ While inside, avoid anything that conducts electricity and is plugged into a wall socket — phones, electrical outlets, lights, desktop computers, televisions, stereos, and water faucets (metal plumbing conducts electricity).
- ♦ Stay away from windows and doors, and stay off porches.
- ♦ Do NOT lie on concrete floors or lean on concrete walls during a thunderstorm. Lightning can travel through any metal wires or bars in concrete walls or flooring.
- ♦ If you are caught outside, go inside immediately. No safe options exist outside. Run to your car or a safe building as soon as you hear thunder.
- ♦ If you are struck by lightning or see someone else struck by lightning, call 911 immediately and treat any injuries as appropriate. There’s no reason to avoid treating the victim; victims are not charged with electricity and are completely safe to touch.

Source: Internet

Lightning Facts from the National Weather Service

- ♦ Lightning can heat its path five times hotter than the surface of the sun
- ♦ About 20 million cloud-to-ground lightning strikes occur in the United States each year
- ♦ There are about 100 lightning strikes around the world in any given second
- ♦ One ground lightning strike can generate between 100 million and 1 billion volts of electricity
- ♦ One lightning strike could light a 100 watt light bulb for 3 months

Source: Internet



Manage Your Account



Use SmartHub to...

- Pay Your Bill
- Check Your Energy Usage
- Set Up Auto Bank Drafts
- Update Account Info
- Contact Member Services

Safe, secure & fast!