

**BOARD OF TRUSTEES**

Tim Fulton, President.....District 6  
Joe Schiffer, V.P.....District 5  
J. Allen Baue, S/T.....District 2  
Reese Stahl.....District 1  
Richard Pinkerton.....District 3  
Steve Nile.....District 4  
Dennis Johnson.....District 7

**OFFICE HOURS**

Monday through Thursday  
7 a.m. to 5:30 p.m.

**406-342-5521**

**MID-YELLOWSTONE  
ELECTRIC  
COOPERATIVE, INC.**



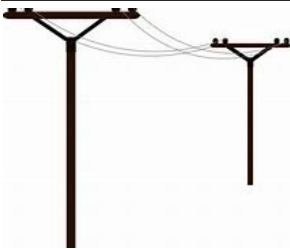
**OFFICE PERSONNEL**

Jason Brothen.....CEO  
Marj Cunningham.....Office Mgr  
Karen Morales.....Billing Clerk  
Jessica Welch.....Cust.Serv.Rep.

**LINE PERSONNEL**

Ken Rolandson....Operations Mgr  
Daren Reeder.....Lineman  
Trent Perkins.....Lineman  
John Cunningham...Appr.Lineman  
Brent Battenfeld.....Lineman  
Tyler Fennern.....Appr.Lineman  
Ryan Silvis.....Appr.Lineman

P.O. BOX 386, HYSHAM, MT 59038



**ALONG THESE LINES . . .**

By Jason Brothen



***LINEWORKERS ARE WIRED FOR SERVICE***

In the quiet hours before dawn breaks, while many of us are still nestled in our beds, lineworkers begin their day, often clad in flame-resistant clothing, safety goggles, rubber gloves and thick, heavy boots.

They are the individuals who epitomize dedication to service in its purest form. As we celebrate Lineworker Appreciation Day on April 14, this is an important moment to reflect on the essential role they play in our daily lives.

Amid towering utility poles and power lines, lineworkers exhibit a strength that goes far beyond the physical. Whether battling inclement weather, troubleshooting technical problems or navigating treacherous heights, lineworkers demonstrate resilience and a quiet determination to keep our lights on, our homes comfortable, and our communities connected.

Mid-Yellowstone Electric Cooperative (MYEC) crews travel across our four-county service territory, building, maintaining and repairing parts of our local system. Their extraordinary skills ensure our homes remain connected to the grid, businesses stay operational, and emergency services remain accessible—a lifeline that connects us all.

In moments of crisis, when the lights go out and we find ourselves in the dark, lineworkers emerge as beacons of hope. Their swift response restores normalcy, offering reassurance in times of uncertainty. Whether repairing storm-ravaged power lines or ensuring continuity during emergencies, their unwavering commitment illuminates life when we need it most.

MYEC lineworkers also answer the call beyond the boundaries of home. Our crews travel to fellow co-ops, near or far, when widespread outages occur and additional support is needed. Cooperation among cooperatives is one of our seven guiding principles, and no one embodies this core commitment better than lineworkers.

This month, as we celebrate the remarkable men and women who ensure reliable power, let's recognize their unwavering dedication to the local communities they serve.

The next time you flip a switch, please take a moment to remember those who make it possible—lineworkers, who are wired for service and dedicated to illuminating life.

**This institution is an equal opportunity provider and employer.**

# Your Cooperative will read non-AMR meters this month.

## Take a break!



The meter reading booklets will be mailed out next month to those without AMR meters and unreadable AMR meters. If we miss you, let us know!

### Remember to obtain an electrical permit

We need to remind those of you who are building homes or moving a trailer home—as well as those of you who are putting in a new stock well or irrigation well service—to remember to obtain an electrical permit. Until our office receives a copy of your permit, we are not allowed to energize the service.

### BE PREPARED FOR SPRING STORMS!

With April moisture often coming in the form of wet, heavy snow, members need to be prepared for storm outages.

- **Disconnect appliances and turn off lights.**
- **Report your outage right away to Mid-Yellowstone Electric—even if you think your neighbor has already called.**
- **If you or a family member require life-support equipment such as a respirator, make sure your cooperative knows about these needs, and have a backup source of power (generator) ready if the power does go out.**

SPRINGTIME IS PLANTING TIME—

**DON'T PLANT THAT TREE UNDER A POWER LINE!**

Don't forget to 'like us' on Facebook. This is another way to keep up with what is going on at the Coop.

### SPRINGTIME ELECTRICAL SAFETY TIPS

Springtime is a great time for yard work and many other outdoor activities. Here are some tips to help keep you safe when you are working outdoors.

1. Always keep power cords and electrical equipment away from water or other wet areas.
2. Look up and look out for overhead power lines. Be sure you're aware of any nearby lines before you climb a ladder.
3. Call before you dig.
4. Keep materials, tools and all parts of your body at least 15 feet away from any overhead power lines at all times, including during the installation of antennas or satellite dishes.
5. Never fly kites or model airplanes near power lines or radio or TV antennas. If your kite does get tangled with overhead lines, don't try to get it down yourself. Call the Coop for assistance. Never use any metallic material in your kite.
6. Before you trim tree limbs and shrubs, watch out for power lines that could be hidden by foliage. Contact the Coop if there are concerns about tree limbs growing into or around overhead power lines on your property.
7. Treat all electric lines with caution and respect.

*Source: Internet*

**SAVE \$\$\$  
PAY YOUR BILL BY  
THE DUE DATE!!**

**MID-YELLOWSTONE ELECTRIC COOPERATIVE, INC.**