

**BOARD OF TRUSTEES**

Tim Fulton, President.....District 6  
Joe Schiffer, V.P.....District 5  
J. Allen Baue, S/T.....District 2  
Reese Stahl.....District 1  
Richard Pinkerton.....District 3  
Steve Nile.....District 4  
Dennis Johnson.....District 7

**OFFICE HOURS**

Monday through Thursday  
7 a.m. to 5:30 p.m.

**406-342-5521**

**MID-YELLOWSTONE  
ELECTRIC  
COOPERATIVE, INC.**



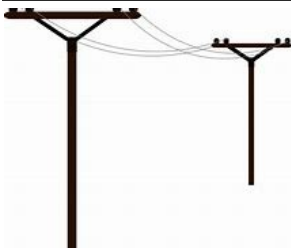
**OFFICE PERSONNEL**

Jason Brothen.....CEO  
Marj Cunningham.....Office Mgr  
Karen Morales.....Billing Clerk  
Jessica Welch.....Cust.Serv.Rep.

**LINE PERSONNEL**

Ken Rolandson....Operations Mgr  
Daren Reeder.....Lineman  
John Cunningham.....Lineman  
Brent Battenfeld.....Lineman  
Tyler Fennern.....Appr.Lineman  
Ryan Silvis.....Appr.Lineman

**P.O. BOX 386, HYSHAM, MT 59038**



**ALONG THESE LINES . . .**

*By Jason Brothen, CEO*



***LINEWORKERS ARE READY WHEN IT MATTERS MOST***

As CEO of Mid-Yellowstone Electric Cooperative (MYEC), I get to see up close what it really takes to keep the lights on for our members. Every April, we take a little extra time to recognize the folks who make that happen day in and day out—our lineworkers.

When a storm hits, and the power goes out, most people see it as an inconvenience. Our lineworkers see it as go-time. They have to leave whatever they are doing, often times heading out in tough weather to get the lights back on safely and as quickly as they can. That kind of dedication doesn't just happen; it comes from many hours of training, experience, and a strong commitment to the people we serve.

What makes it even more meaningful is that they're not just restoring power to "members." They are restoring power to their own friends, family, neighbors and communities. They live here. Their kids go to school here. They know that electricity isn't just a convenience; it keeps our farms running, businesses open, schools operating and emergency services ready. Powering the places we call home is personal.

Electric cooperatives like MYEC were built on neighbors helping neighbors, and our lineworkers live that out every day. They're often the first ones out and the last ones back, putting in long hours. And when needed, they travel to other cooperatives through mutual aid. That teamwork makes the whole cooperative family stronger.

We know it's frustrating when the lights go out, and we truly appreciate your patience and support when it happens. Linework is tough, physical and can be dangerous work. Our crews take safety seriously and rely on each other every step of the way. They take pride in doing the job right and getting the lights back on.

On April 13, we will celebrate Lineworker Appreciation Day, but honestly, they deserve more than just one day.

To our lineworkers: thank you for showing up, for being ready and for caring so much about the communities we serve. We are proud of you and grateful for all you do.

**This institution is an equal opportunity provider and employer.**

# Your Cooperative will read non-AMR meters this month.

## Take a break!



The meter reading booklets will be mailed out next month to those without AMR meters and unreadable AMR meters. If we miss you, let us know!

### YOUTH TOUR WINNER IS CHOSEN

A Hysham High School student has been selected as one of 32 Montana winners of an all-expense paid trip to Washington D.C., courtesy of Mid-Yellowstone Electric Cooperative. This is the 24th year that MYEC has sponsored a winner for the Youth Tour program.

Reagan Fink, daughter of Chad and Erin Fink, will tour the nation's capital in June as part of the "Youth to Washington" Tour sponsored by the National Rural Electric Cooperative Association. The Montana youth will join more than 1,900 students from 40 states.

Fink's essay was one of ten essays submitted to MYEC by eligible students in the service area who wrote on the topic: "All cooperatives share a concern for their communities. Write about how your local cooperative supports your community or detail new ways they could get involved." Watch for a future *Rural Montana* to see Reagan's essay written about how MYEC benefits her community and supports the Town of Hysham.



SPRINGTIME IS PLANTING TIME—

DON'T PLANT THAT TREE UNDER A POWER LINE!

Don't forget to 'like us' on Facebook. This is another way to keep up with what is going on at the Coop.

### OUTDOOR & INDOOR ELECTRICAL SAFETY TIPS

This time of the year is a great time for yard work, spring-cleaning and many other activities. Here are some tips to help keep you safe when you are working outdoors and indoors.

- **Inspect Outlets:** Check outdoor outlets for cracks or covers that aren't weather-sealed, and test Ground Fault Circuit Interrupters (GFCIs) to ensure they trip properly.
- **Water Safety:** Never use electric power tools or lawnmowers in the rain, on wet grass, or in puddles.
- **Clearance:** Keep ladders, trimming tools, and toys at least 10 feet away from overhead power lines.
- **Clean Appliances:** Vacuum the dust from refrigerator coils to prevent fires and improve efficiency.
- **Check Cords:** Inspect vacuum, trimmer, and appliance cords for damage. Never run cords under rugs.
- **Don't Overload:** Avoid plugging too many appliances into one outlet or surge protector.

SAVE \$\$\$  
PAY YOUR BILL BY  
THE DUE DATE!!

MID-YELLOWSTONE ELECTRIC COOPERATIVE, INC.