

BOARD OF TRUSTEES

Tim Fulton, President.....District 6
Joe Schiffer, V.P.....District 5
J. Allen Baue, S/T.....District 2
Reese Stahl.....District 1
Richard Pinkerton.....District 3
Steve Nile.....District 4
Dennis Johnson.....District 7

OFFICE HOURS

Monday through Friday
8 a.m. to 5 p.m.

406-342-5521

**MID-YELLOWSTONE
ELECTRIC
COOPERATIVE, INC.**



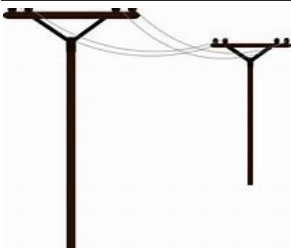
OFFICE PERSONNEL

Jason Brothen.....Manager
Marj Cunningham.....Office Mgr
Karen Morales.....Billing Clerk
Jessica Thompson..Cust.Serv.Rep.

LINE PERSONNEL

Ken Rolandson....Operations Mgr
Daren Reeder.....Lineman
Trent Perkins.....Lineman
John Cunningham...Appr.Lineman
Brent Battenfeld.....Lineman
Tyler Fennern.....Appr.Lineman
Kaden Moeller.....Appr.Lineman

P.O. BOX 386, HYSHAM, MT 59038



ALONG THESE LINES . . .



SENDING A CHILD TO COLLEGE? DISCUSS SAFETY FIRST

When you are shopping for dorm room supplies, décor, snacks and other back-to-campus items, take a moment to discuss safety tips with your child before hugs and goodbyes.

Here are some safety topics to help keep your college student safe.

Electrical safety tips:

- Do not put a cellphone under a pillow or place it on or under bedding. It could overheat or catch fire.
- In the dorm or apartment, make sure outlets near water sources are equipped with ground-fault circuit interrupters (GFCIs). If they are not, contact the resident assistant, campus housing staff or landlord. (Look for a test and reset button on the face of the outlet.)
- Use power strips with an over-current protector that will shut off power if too much current is drawn.
- Avoid overloading extension cords, power strips or outlets.
- Do not hang decorative lights with nails or tacks; always use plastic hooks.
- Do not run electrical cords across traffic paths or under rugs.

General safety tips:

- Locate emergency call buttons or phones across campus in case of an emergency.
- Walk with a friend, especially at night.
- When attending events or parties, go with at least one person you know and trust. If your friend leaves, do not stay.
- Always be aware of your surroundings.
- Avoid being distracted (listening to music or texting) while walking on campus.
- Find out what type of public safety department is on campus and how it functions; ask which services the department offers and the steps it takes to prevent crime.

This institution is an equal opportunity provider and employer.

Childproof Your Home: Tamper Resistant Receptacles

Each year, approximately 2,400 children suffer severe shock and burns when they stick items into the slots of electrical receptacles—that is nearly seven children a day. It is estimated that there are six to 12 fatalities a year related to this. Nearly one-third of these injuries are the result of small children placing ordinary household objects, such as keys, pins, or paperclips into the outlets with disastrous consequences.

Located in practically every room in every house throughout the United States, electrical outlets and receptacles represent a constant and real danger wherever young children are found.

But now, new technology called tamper resistant receptacles, or TRRs, provide a simple, affordable, reliable, and permanent solution to help prevent these kinds of injuries.

Tamper resistant receptacles use a plastic shutter just inside the two vertical slots, and it will not release unless equal pressure is applied to both of them at the same time by the two prongs of an electrical cord. When you look into the two slots, you can see the plastic shutter plate.

Tamper proof outlets are currently required in all hospitals and new homes. If you have a child or are planning to have children in the future, they are a great investment. Not only do they prevent dangerous electrical accidents, but they also give you peace of mind.

For more information go to completeelectrical.biz/what-is-a-tamper-resistant-outlet/.

Source: Internet



Money-Saving Water Heater Tips

- 1. Drain the water heater from time to time.** You can extend the life of your new or existing water heater by draining a few gallons from it each month. Make sure to drain the water until it runs clear. This removes sediment that collects over time. This sediment makes the water heater less efficient and shortens its lifetime. Refer to your installation model for instructions on how to do this critical step.
- 2. Lower the temperature of your water heater.** The standard temperature setting is often set far higher than it needs to be. Lower it to 115 degrees to prevent scalds and to conserve both water and energy.

Manage Your Account



Use SmartHub to...

- Pay Your Bill
- Check Your Energy Usage
- Set Up Auto Bank Drafts
- Update Account Info
- Contact Member Services

Safe, secure & fast!

SAVE \$\$
PAY YOUR BILL
BY THE
DUE DATE!!