

BOARD OF TRUSTEES
 Tim Fulton, President.....District 6
 Joe Schiffer, V.P.....District 5
 J. Allen Baue, S/T.....District 2
 Reese Stahl.....District 1
 Richard Pinkerton.....District 3
 Steve Nile.....District 4
 Dennis Johnson.....District 7

OFFICE HOURS
 Monday through Thursday
 7 a.m. to 5:30 p.m.

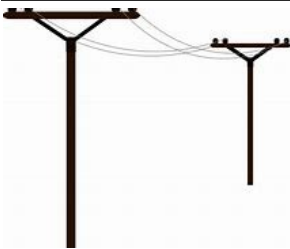
406-342-5521

**MID-YELLOWSTONE
 ELECTRIC
 COOPERATIVE, INC.**



OFFICE PERSONNEL
 Jason Brothen.....CEO
 Marj Cunningham.....Office Mgr
 Karen Morales.....Billing Clerk
 Jessica Welch.....Cust.Serv.Rep.
LINE PERSONNEL
 Ken Rolandson....Operations Mgr
 Daren Reeder.....Lineman
 Trent Perkins.....Lineman
 John Cunningham...Appr.Lineman
 Brent Battenfeld.....Lineman
 Tyler Fennern.....Appr.Lineman
 Ryan Silvis.....Appr.Lineman

P.O. BOX 386, HYSHAM, MT 59038



ALONG THESE LINES . . .

by Jason Brothen



MYEC ANNOUNCES RATE INCREASE TO ADDRESS RISING MATERIAL AND POWER COSTS

In light of escalating operational costs, the board of directors of Mid-Yellowstone Electric Cooperative (MYEC) has announced a rate increase effective Dec. 20, 2024. The adjustment is necessary to account for the rising cost of both materials and power generation, which has significantly impacted the cooperative's financials in recent years.

As a not-for-profit cooperative, MYEC's primary mission is to serve our members with safe, reliable and affordable electricity, while covering the operational and infrastructure cost necessary to maintain the power grid. When these costs rise, the co-op must adjust rates to stay financially viable and to continue to deliver reliable electricity.

The cost of critical infrastructure has surged due to global supply chain disruptions, inflation, and shortage of key commodities like copper and steel. These materials are crucial for the maintenance and repair of power lines, transformers and substations. Additionally, the prices of material and equipment such as poles, insulators, and circuit breakers have risen, increasing the cooperative's costs for new power lines, maintenance and emergency repairs.

The cost of generating electricity has also spiked. Fluctuations in fuel prices, particularly natural gas—have raised the cost of purchased power. Regulatory changes aimed at reducing carbon emissions have added compliance costs, further impacting overall power generation expenses.

To enhance efficiency and reliability, the cooperative has been investing in its power grid. The aging infrastructure needs upgrades, and the implementation of smart grid technologies has enabled better monitoring and quicker response times during outages. However, these advancements come at a cost.

Under the new rate structure, residential members will see an increase of \$2.00 per meter for their facility charge, and the rate per kilowatt-hour (kWh) will rise by 0.3 cents. For example, a residential member with an average usage of 2,000 kWh per month will experience the following charges:

	Old Rate	New Rate
2,000 kWh	2000 X \$0.109 = \$218	2000 X \$0.112 = \$224
Facility Charge	\$41.50	\$43.50
Total	\$259.50	\$267.50

This institution is an equal opportunity provider and employer.

MYEC Announces Rate Increase To Address Rising Material and Power Costs (cont.)

While this increase may cause concern among members, I want to emphasize that it is a necessary step to ensure the continued reliability of the grid and to adapt to the rising costs outside of the co-op's control. We understand the impact this may have on you, the member, but we are committed to providing transparency and ensuring that this adjustment will allow us to maintain and improve the services you rely on every day.

MYEC is actively monitoring material and power generation costs and will continue to evaluate its financial position. While rate increases are necessary in the short term, the co-op is focused on long-term solutions to stabilize costs and provide reliable service that our members expect.

For additional information on rates please visit www.myec.coop.

ATTENTION STUDENTS!

High school seniors and college undergrads may apply for a \$500 scholarship available through the Montana Electric Cooperatives' Association. **Applications are due January 23, 2025**

High school seniors and college undergrads may apply for a \$1000 scholarship that will be awarded by Basin Electric Power Cooperative to a dependent of an MYEC member.

Applications are due January 23, 2025

MYEC will award two scholarships based on the MECA Memorial Scholarship applications, one for \$1,000 and one for \$500. **Get your MECA application, transcripts and letters of reference to MYEC by January 23, 2025** in order to be eligible for these two scholarships.

Go to our website at myec.coop under Services/Scholarship to download these applications and see all of the scholarship opportunities given by Mid-Yellowstone Electric Cooperative.

Trustee Election Process Begins in December

Many of us don't think about the process of electing our Board of Trustees until we arrive at the annual meeting. But the procedure actually begins at the December board meeting when the trustees appoint up to eleven members to serve on a nominating committee.

These people then meet to prepare a list of nominees to fill the expired terms. The number of expired terms varies with two trustees completing their terms one year, two trustees the next, and then three trustees the following year.

May members who are not on the nominating committee submit nominations for the trustee positions? Yes, a procedure is provided for such action.

The entire procedure for election of trustees is detailed in the bylaws of the Cooperative. Article IV, Section 3, states: "It shall be the duty of the board of trustees to appoint, not less than 30 days nor more than 120 days before the date of a meeting of the members at which trustees are to be elected, a committee on nominations consisting of not less than five nor more than eleven members who shall be selected from different districts of Mid-Yellowstone Electric's service territory so as to insure equitable representation. No member of the board of trustees may serve on such committee. The committee shall prepare and post at the principal office of the Cooperative at least 20 days

before the meeting a list of nominations for trustees; any 15 or more members acting together may make other nominations by petition not less than 45 days prior to the meeting and the Secretary shall cause such nominations to be posted at the same place where the list of nominations made by the committee is posted. The Secretary shall be responsible for the mailing with the notice of the meeting or separately, but at least ten days before the date of the meeting, a statement of the number of trustees to be elected and the names and districts of the candidates. Notwithstanding anything contained in this section, failure to comply with any of the provisions of this section shall not affect in any manner whatsoever the validity of any election of trustees."

The trustee's role in a cooperative is:

- To act as a trustee for the membership's interest in the cooperative.
- To establish policies and procedures for the effective operation of the cooperative.
- To review and approve annual work plans and budgets.
- To receive periodic reports for conformity with the cooperative's objectives, plans and programs.

With these provisions for nomination by petition, the members of Mid-Yellowstone can feel that they really do have a voice in the election of trustees. Plan to attend the MYEC Annual Meeting in March and vote your preference.

The districts which are up for election this year are: District #2 (Myers, Tullock Creek, North Country-West of Ingomar); and District #5 (North & East of Rosebud, Sweeney Creek, and the North end of Rosebud Creek)