

**BOARD OF TRUSTEES**  
Steve Nile, President.....District 4  
Joe Schiffer, V.P.....District 5  
Arlo Jensen, Sec.-Treas.....District 1  
Jim DeCock.....District 7  
Tim Fulton.....District 6  
Tami Kimball.....District 2  
Richard Pinkerton.....District 3

**OFFICE HOURS**  
Monday through Friday  
8 a.m. to 5 p.m.

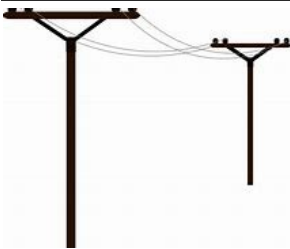
**406-342-5521**

**MID-YELLOWSTONE  
ELECTRIC  
COOPERATIVE, INC.**



**OFFICE PERSONNEL**  
Jason Brothen.....Manager  
Marj Cunningham.....Office Mgr  
Karen Morales.....Billing Clerk  
Amy Robbins.....Cust. Serv. Rep.  
**LINE PERSONNEL**  
Ken Rolandson....Operations Mgr  
Rick Lewis.....Foreman  
Daren Reeder.....Lineman  
Trent Perkins.....Lineman  
Shane Freese.....Lineman  
John Cunningham...Appr.Lineman

P.O. BOX 386, HYSHAM, MT 59038



**ALONG THESE LINES . . .**



***MORE UPDATES TO THE UPCOMING ANNUAL MEETING***

The date has been set and the nominated candidates have been chosen.

The Annual Meeting of the members will be held on the evening of March 15th. At this time there is still discussion as to where the meeting will be held. The site will be decided by the March issue, and you can also watch on MYEC's website for updates. In the January issue of Rural Montana it was stated that "cooperative members would be able to vote for candidates at the next annual meeting"; however, that was not what was voted on by the Board at their December meeting. Last year, because of Covid, mail-in-ballots were used for the voting of trustees and bylaw changes, and there was a higher amount of ballots received compared to in-person meeting votes; therefore, the Board chose to have mail-in-ballot voting in advance of the annual meeting. Election material will be mailed on February 11, 2022, and the election will close on March 11, 2022. That means that the ballots should be mailed enough days ahead of time to make it by the March 11 deadline. Please read the instructions on how to process your ballot in order for it to be a valid vote.

On January 11th the Nominating Committee met at the MYEC office to choose candidates for the two open positions. In District #2 (Myers, Tullock Creek, North Country-West of Ingomar) the candidates are incumbent, Tami Kimball, and J. Allen Baue. In District #5 (the East side of the system including North & East of Rosebud, Sweeney Creek, and the North end of Rosebud Creek) the candidates are incumbent, Joseph J. Schiffer, and Allen S. Wetherelt. Write-in candidates may be added to your mail-in-ballot also, if you choose.

Watch your mail for the voting ballot, 2021 Cooperative Report and other information about your Annual Meeting. Go to [www.myec.coop](http://www.myec.coop) for updates, or call the office if you have questions.



**This institution is an equal opportunity provider and employer.**

## Appliances That Use The Most Energy

Knowing how to save energy in the winter is a must, especially as weather has the single largest impact on your energy bill.

One way in helping to save energy in the winter is to first know what types of appliances around your home are using the most energy. Here are the top nine:

1. Cooling and heating: 47% of energy use
2. Water heater: 14% of energy use
3. Washer and dryer: 13% of energy use
4. Lighting: 12% of energy use
5. Refrigerator: 4% of energy use
6. Electric oven: 3-4% of energy use
7. TV, DVD, cable box: 3% of energy use
8. Dishwasher: 2% of energy use
9. Computer: 1% of energy use

Source: Internet

## Mark your calendars now---



Mid-Yellowstone's  
83rd  
Annual Meeting

**on March 15th...**

## DO YOU NEED ASSISTANCE?

Call Action for Eastern Montana at **1-800-227-0703** to get help through LIEAP or Energy Share of Montana. Applications can be picked up at the office of MYEC, or go on-line to get an application at **myec.coop**.



## Nondiscrimination Statement

Mid-Yellowstone Electric Cooperative, Inc. is an equal opportunity provider and employer.

If you wish to file a Civil Rights program complaint of discrimination, complete the USDA Program Discrimination Complaint Form, found online at [http://www.ascr.usda.gov/complaint\\_filing\\_cust.html](http://www.ascr.usda.gov/complaint_filing_cust.html), or at any USDA office, or call (866) 632-9992 to request the form. You may also write a letter containing all of the information requested in the form. Send your completed complaint form or letter to us by mail at U.S. Department of Agriculture, Director, Office of Adjudication, 1400 Independence Avenue, S.W., Washington, D.C. 20250-9410, by fax (202) 690-7442 or email at [program.intake@usda.gov](mailto:program.intake@usda.gov).

## IN CASE OF OUTAGE:

***At all hours of the day or night, you may contact MYEC by calling:***

**406-342-5521**

## BEFORE YOU CALL...

1. Check all breakers and fuses in the building.
2. Check the breakers below your meter.
3. Check to see if your neighbors have power.

**MID-YELLOWSTONE ELECTRIC COOPERATIVE, INC.**