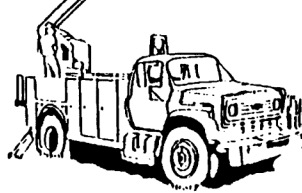


BOARD OF TRUSTEES
 Tim Fulton, President.....District 6
 Joe Schiffer, V.P.....District 5
 J. Allen Baue, S/T.....District 2
 Reese Stahl.....District 1
 Richard Pinkerton.....District 3
 Steve Nile.....District 4
 Jim DeCock.....District 7

OFFICE HOURS
 Monday through Friday
 8 a.m. to 5 p.m.

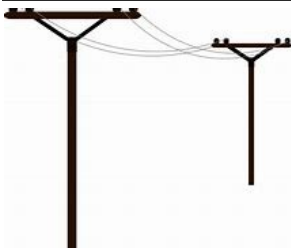
406-342-5521

**MID-YELLOWSTONE
 ELECTRIC
 COOPERATIVE, INC.**



OFFICE PERSONNEL
 Jason Brothen.....Manager
 Marj Cunningham.....Office Mgr
 Karen Morales.....Billing Clerk
 Jessica Thompson..Cust.Serv.Rep.
LINE PERSONNEL
 Ken Rolandson....Operations Mgr
 Daren Reeder.....Lineman
 Trent Perkins.....Lineman
 John Cunningham...Appr.Lineman
 Brent Battenfeld.....Lineman
 Tyler Fennern.....Appr.Lineman
 Kaden Moeller.....Appr.Lineman

P.O. BOX 386, HYSHAM, MT 59038



ALONG THESE LINES . . .



WINTER FIRE PREVENTION IN YOUR HOME

Although cooking is the number one cause of house fires during the winter, in 2015-2019 thirteen percent of U.S. home structure fires were caused by electrical failures or malfunctions. Here are some electrical devices you should be aware of that can easily start a home on fire if preventative measures are not taken.

1. **Space Heaters.** Do not leave space heaters on for an extended period and never leave them unattended. Never use it in wet spaces such as bathrooms or kitchens. Keep all materials at least 3 feet away from your space heater.
2. **Overloaded Outlets.** Outlets can carry too much electricity and that will generate a significant amount of heat. The heat will cause wear and tear which can eventually lead to a fire. To prevent this, plug all appliances directly into the wall receptacle outlet. Replace worn and old extension cords to avoid accidental overheating. Remember, only plug in one heat producing appliance into an outlet at a time.
3. **Electric Blankets.** Electric blankets can malfunction due to wear and tear, manufacturing issues, and improper usage; all contributing to the danger of combustion. Regularly check and throw out old or worn electric blankets/heating pads. Unplug whenever they are not being used.
4. **Dryers.** The leading cause of dryer-related fires is the failure to clean dryer vents regularly. When lint builds up in the dryer, it is highly flammable and can clog the venting system. Always clean your dryer lint filter after every load of laundry and inspect the vents every few months for lint build up. Improper dryer installation can also quickly lead to an electrical fire.
5. **Generators.** If you plan to use a portable generator when your power happens to go out, make sure it is installed properly and ready for operation. Do not set it up in your garage. The carbon monoxide fumes can poison you. Place the generator at least 20 feet from a structure with the engine exhaust directed away from windows and doors. Its heat and exhaust can also damage a home's siding and start a fire.

Source: *Internet*

"Neighbors helping neighbors. That's the electric cooperative tradition." ...Glenn English, CEO, NRECA

This institution is an equal opportunity provider and employer.

Energy Share of Montana

This helps Montana residents faced with energy emergencies meet their needs and move toward self-reliance. Eligibility for Energy Share is not determined solely on income but also on the extenuating circumstances a household is facing. Energy Share is primarily funded by State-mandated Universal System Benefits Program (USBP) charges, donations from private individuals and corporations, and repayments by previous recipients.

Energy Share of Montana may also assist with replacement of an inefficient refrigerator or a non-working water heater. Refrigerator requirements—household member 60+ years of age or disabled by Social Security standards, own your home and have an older, inefficient refrigerator. Water heater requirements—own your home and have a non-working water heater.

Call 1-800-227-0703 for more information.

Build an Emergency Kit Before the Power Goes Out

Here are a few suggestions of what you should have in an Emergency Kit:

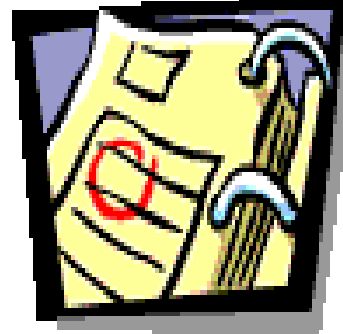
- Water—at least a gallon per person, per day
- Non-perishable food (such as dried fruit, peanut butter or energy bars)
- Cash
- Prescription medicines
- Extra batteries or an alternative power source
- Matches in a waterproof container
- Flashlights
- Whistle to signal for help
- Sleeping bag or warm blanket

Nondiscrimination Statement

Mid-Yellowstone Electric Cooperative, Inc. is an equal opportunity provider and employer.

If you wish to file a Civil Rights program complaint of discrimination, complete the USDA Program Discrimination Complaint Form, found online at http://www.ascr.usda.gov/complaint_filing_cust.html, or at any USDA office, or call (866) 632-9992 to request the form. You may also write a letter containing all of the information requested in the form. Send your completed complaint form or letter to us by mail at U.S. Department of Agriculture, Director, Office of Adjudication, 1400 Independence Avenue, S.W., Washington, D.C. 20250-9410, by fax (202) 690-7442 or email at program.intake@usda.gov.

Mark your
calendars
now —



Mid-Yellowstone's
85th
Annual Meeting

on March 20th...

SAVE \$\$

**PAY YOUR BILL BY
THE
DUE DATE!!**

Manage Your Account



Use SmartHub to...

- Pay Your Bill
- Check Your Energy Usage
- Set Up Auto Bank Drafts
- Update Account Info
- Contact Member Services

Safe, secure & fast!

*Happy
Valentine's
Day*

MID-YELLOWSTONE ELECTRIC COOPERATIVE, INC.