

BOARD OF TRUSTEES

Tim Fulton, President.....District 6
Joe Schiffer, V.P.....District 5
J. Allen Baue, S/T.....District 2
Reese Stahl.....District 1
Richard Pinkerton.....District 3
Steve Nile.....District 4
Dennis Johnson.....District 7

OFFICE HOURS

Monday through Friday
8 a.m. to 5 p.m.

406-342-5521

**MID-YELLOWSTONE
ELECTRIC
COOPERATIVE, INC.**



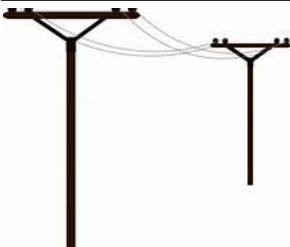
OFFICE PERSONNEL

Jason Brothen.....Manager
Marj Cunningham.....Office Mgr
Karen Morales.....Billing Clerk
Jessica Thompson..Cust.Serv.Rep.

LINE PERSONNEL

Ken Rolandson....Operations Mgr
Daren Reeder.....Lineman
Trent Perkins.....Lineman
John Cunningham...Appr.Lineman
Brent Battenfeld.....Lineman
Tyler Fennern.....Appr.Lineman
Kaden Moeller.....Appr.Lineman

P.O. BOX 386, HYSHAM, MT 59038



ALONG THESE LINES . . .



OUTDOOR ELECTRICAL SAFETY

We all become so accustomed to power lines that we easily forget they are there; however, they are deadly if touched. It seems elementary to say this, but electric lines are placed upon power poles and buried underground to help keep them away from you. To give you some perspective about the danger of contacting a wire, each hot wire on an electric line has enough power to supply electricity to 30-70 homes.

Summer is a time of severe weather with strong winds, hail, lightning, micro-bursts, and numerous other maladies. With Mother Nature continually battering your Cooperative's lines, **you members are our eyes and ears**. Your Cooperative has about **1,040** miles of electric line. With numerous storms during the year, your Cooperative's employees cannot possibly be aware of every unsafe condition that exists. **You members are vital** in reporting unsafe conditions to us. If you notice broken or sagging wire, broken poles, broken or loose guy wires, eroding river banks getting close to poles, trees in power lines, or anything else you think may be a hazard, please call us. **If you are long distance, call us toll-free at 1-888-392-5521.**

Your assistance could save many hours of outage time, injury or damage, or perhaps even a life. Upon receiving notice from you, we will document the hazard and schedule it for repair, either immediately or at some future time, depending on our assessment of the severity of the hazard.

Our thanks to many of you members who do not hesitate to call when you see a line hazard!

2023 ALLOCATION OF CAPITAL CREDITS

For most of our active members who were members in 2023 you should have seen this message on your May bill statement: *****SAVE THIS BILL*****YOUR 2023 ALLOCATION INFORMATION IS ON THIS BILL. PLEASE RETAIN THIS BILL FOR YOUR PERMANENT RECORDS. Then in the 'Billing Messages' was an explanation of Allocations as well as the amount that was allocated from 2023 to your capital credit account. REMEMBER: 1. You do not owe these amounts. 2. These amounts are not now payable and do not represent cash but rather your equity in your Cooperative. 3. You cannot apply these amounts to your electric bill.

This institution is an equal opportunity provider and employer.

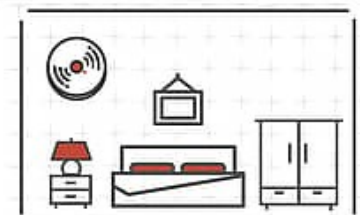
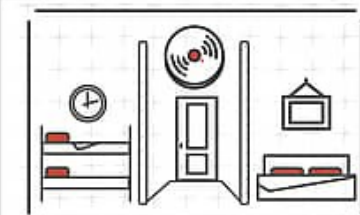

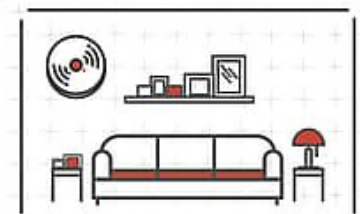

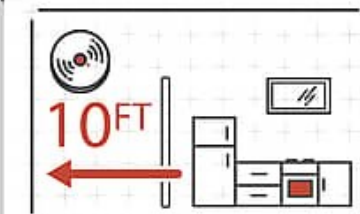
SMOKE ALARMS SAVE LIVES

According to the **National Fire Protection Association**, an average of **1,450 fire deaths** occur every year in homes with missing or non-functioning smoke alarms.



   **2/3** fire deaths occur in homes with missing or non-functioning smoke alarms.

INSTALL SMOKE ALARMS IN:

<p>Every bedroom</p> 	<p>Outside each sleeping area</p> 	<p>On every level of your home, including basement</p> 
<p>On levels without bedrooms, install in living room, den, or family room</p> 	<p>Install near stairways leading to upper levels</p> 	<p>Install smoke alarms 10 feet from cooking appliances to minimize false alarms</p> 



Use **interconnected smoke alarms** for additional safety and early warning



Low pitch sound, and vibration smoke alarms are available for those who are **hard of hearing**



DO NOT INSTALL near windows, doors, or ducts



NEVER paint smoke alarms

REMEMBER TO:

TEST smoke alarms monthly **CHANGE** battery yearly **REPLACE** alarm every 10 years

Please share this free resource to save lives



www.facebook.com/ESFI.org



www.twitter.com/ESFI.org



www.youtube.com/ESFI.org

Put Safety First!!



The Cooperative would like to wish all of it's members a safe and joyful 4th of July!

JULY 2024

MID-YELLOWSTONE ELECTRIC COOPERATIVE, INC.