

BOARD OF TRUSTEES

Tim Fulton, President.....District 6
Joe Schiffer, V.P.....District 5
Arlo Jensen, Sec.-Treas.....District 1
Jim DeCock.....District 7
Steve Nile.....District 4
J. Allen Baue.....District 2
Richard Pinkerton.....District 3

OFFICE HOURS

Monday through Friday
8 a.m. to 5 p.m.

406-342-5521

**MID-YELLOWSTONE
ELECTRIC
COOPERATIVE, INC.**



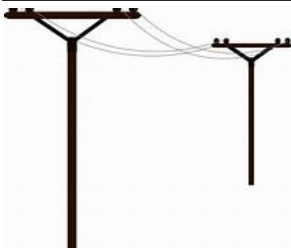
OFFICE PERSONNEL

Jason Brothen.....Manager
Marj Cunningham.....Office Mgr
Karen Morales.....Billing Clerk
Amy Robbins.....Cust. Serv. Rep.

LINE PERSONNEL

Ken Rolandson....Operations Mgr
Rick Lewis.....Foreman
Daren Reeder.....Lineman
Trent Perkins.....Lineman
John Cunningham...Appr.Lineman
Brent Battenfeld....Appr.Lineman
Tyler Fennern.....Appr.Lineman

P.O. BOX 386, HYSHAM, MT 59038



ALONG THESE LINES . . .



WINTER METER READINGS

As a small cooperative, one of the ways to cut costs is to have the rural members read their own meters. MYEC does have many faithful meter readers who call their readings in or send the readings in by mailing meter reading cards monthly. For those members who are too busy to read their meter(s), several hours are spent each month estimating those meters. Estimates can be spot-on, or they may be too high or too low; the member usually finds out when they receive their April statement after the linemen have read all the meters on the system.

We realize that for some of our members it is too difficult to go out into the cold; it may even be dangerous. For those folks, **please** stay in and let your meters be estimated. But, for those members who are able to read your meters during the winter months, please do, so that you don't get a surprise when April comes!

MYEC actually does have Policy Bulletin 302 which states that if a meter has been estimated for three months, a warning will be sent out. If the warning is not heeded, a lineman can be sent out to read the meter and the member will be charged \$25 for each meter that gets read. We don't like to have to do this to our members. The easier and less costly way would be for the members to read their meters, even if it's every other month.

Remember that you can call your meter reading in day or night — the answering service can take it after hours. Also, with our computer system, you can enter your reading online when you use Smart Hub. For those of you who mail your reading card in, please try to mail them by the 25th of the month so they can get to the office before the bills are processed. If you read your meter after the 25th, it is probably best to call it into the office so that your actual reading can get entered before the bills are processed.

Reading your meter each month benefits the Cooperative and yourself!

This institution is an equal opportunity provider and employer.

Rural Montana

LIHEAP, LIHWAP and Weatherization Programs
2022-2023 Program Year
 Annual Income Levels

Household Size	LIHEAP, LIHWAP	WZ Limits
1	\$28,136	\$28,136
2	\$36,793	\$36,793
3	\$45,450	\$46,060
4	\$54,108	\$55,500
5	\$62,765	\$64,940
6	\$71,422	\$74,380

Manage Your Account



Use SmartHub to...

- Pay Your Bill
- Check Your Energy Usage
- Set Up Auto Bank Drafts
- Update Account Info
- Contact Member Services

Safe, secure & fast!



ENERGY EFFICIENCY

Tip of the Month

Water heating accounts for a large portion of home energy bills. To save energy (and money) used for water heating, repair any leaky faucets, install low-flow fixtures and insulate accessible hot water lines. When it's time to purchase a new washing machine or dishwasher, look for models that are ENERGY STAR®-certified.



ENERGY SHARE OF MONTANA

This helps Montana residents faced with energy emergencies meet their needs and move toward self-reliance. Eligibility for Energy Share is not determined solely on income but also on the extenuating circumstances a household is facing. Energy Share is primarily funded by State-mandated Universal System Benefits Program (USBP) charges, donations from private individuals and corporations, and repayments by previous recipients.

Often, families who live from paycheck to paycheck face some type of financial emergency when an unexpected expense occurs. This could be something like a vehicle break down, lay off from work, or medical expense/emergency.

Energy Share is the only assistance available to Montana families who have income too high to qualify for LIHEAP assistance. If applying for Energy Share during the heating season (October-April), you must apply for LIHEAP as well. If applicants are ineligible for LIHEAP or are still in need of assistance once receiving a LIHEAP benefit, they can apply for Energy Share.

Applications are available at MYEC, or online at aemt.org/energy-programs.