

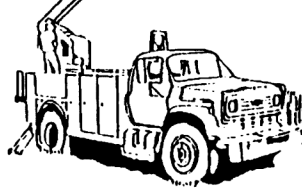
**BOARD OF TRUSTEES**

Tim Fulton, President.....District 6  
 Joe Schiffer, V.P.....District 5  
 J. Allen Baue, S/T.....District 2  
 Reese Stahl.....District 1  
 Richard Pinkerton.....District 3  
 Steve Nile.....District 4  
 Jim DeCock.....District 7

**OFFICE HOURS**  
 Monday through Friday  
 8 a.m. to 5 p.m.

**406-342-5521**

**MID-YELLOWSTONE  
 ELECTRIC  
 COOPERATIVE, INC.**



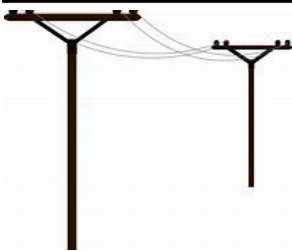
**OFFICE PERSONNEL**

Jason Brothen.....Manager  
 Marj Cunningham.....Office Mgr  
 Karen Morales.....Billing Clerk  
 Jessica Thompson..Cust.Serv.Rep.

**LINE PERSONNEL**

Ken Rolandson....Operations Mgr  
 Daren Reeder.....Lineman  
 Trent Perkins.....Lineman  
 John Cunningham...Appr.Lineman  
 Brent Battenfeld....Appr.Lineman  
 Tyler Fennern.....Appr.Lineman  
 Kaden Moeller.....Appr.Lineman

**P.O. BOX 386, HYSHAM, MT 59038**



**ALONG THESE LINES . . .**



***NEW FACES AT MID-YELLOWSTONE ELECTRIC COOPERATIVE***

Jessica Thompson is MYEC's Customer Service Representative as of the end of May. She has been living in the Hysham area for about 3 years, but was working in Forsyth.

Joining the MYEC linemen crew last year were Tyler Fennern (right) and Brent Battenfeld (middle). Tyler came from Aitkin, Minnesota, but his family originally comes from Forsyth. Tyler attended line school in Mitchell, SD. Brent comes from Wells, Nevada. He attended NW Lineman College in Meridian, Idaho. Newer to the crew is Kaden Moeller (left). He is from Sheridan, Wyoming and attended Mitchell Technical College in Mitchell, SD.

MYEC is appreciative to have such hard working and devoted employees added to our Coop.



**This institution is an equal opportunity provider and employer.**

# GENERATOR SAFETY

## USE BACKUP POWER SAFELY

When used properly, portable and standby generators are a great option to provide backup power during brownouts or blackouts.

Learn how to use generators safely with the following tips:

### GENERATORS

#### Location



Always keep generators at least **20 feet** away from your home



Never operate a generator in an **enclosed space**



Make sure the generator has **3-4 feet** of clear space above and on all sides for proper ventilation



Keep generators **away** from doors, windows, and vents



Always **direct exhaust away** from your home

#### Use



Always use **grounded cords** and inspect cords for damage prior to use



Use the **proper cord** for the wattage being used



Always use **GFCI protection**



Make sure to start / stop generators when **no electrical loads** are connected



Keep generators **dry, do not operate when wet**, and refuel when cool



**Do not overload** generators



Do not plug a generator directly into your home, connect items being powered **directly to the generator**

### TRANSFER SWITCHES



Transfer switches, whether manual or automatic, allow you to choose between **utility power** or **backup generator power**



Transfer switches are the only way to **safely power** your home's electrical system



Using a transfer switch **prevents backfeeding**. This occurs when your generator becomes a power source for the **surrounding area** and can damage your home, your neighbor's homes, and injure workers trying to restore power

## CARBON MONOXIDE (CO) POISONING PREVENTION



Improper use and installation of generators could **cause CO poisoning**



Make sure your home has **carbon monoxide alarms** outside each sleeping area and on every level of the home



CO can kill in as little as **5 minutes**

#### Symptoms of CO poisoning



Dizziness



Headaches



Nausea



Tiredness



If you experience CO poisoning symptoms, **get fresh air, do not reenter areas, and call 911.**

Please share this free resource to save lives



[www.facebook.com/ESFI.org](http://www.facebook.com/ESFI.org)



[www.twitter.com/ESFI dot org](http://www.twitter.com/ESFI dot org)



[www.youtube.com/ESFI dot org](http://www.youtube.com/ESFI dot org)

HOLIDAYS IN HYSHAM

Friday, December 1

See you there!

happy  
Thanksgiving

COOPERATIVES



Businesses People Trust

NOVEMBER 2023

MID-YELLOWSTONE ELECTRIC COOPERATIVE, INC.